

ST. ELIZABETH, Guerneville

ST. CATHERINE OF SIENA, Monte Rio - ST. COLMAN, Cazadero

(707) 869-2107 • 14095 Woodland Drive, Guerneville, CA 95446

Office Hours: Tue - Fri 9:00 a.m. - 1:00 p.m.

Father Luis Peñaloza, PASTOR

Baptisms: By appointment. Preparation classes required.

Marriages: Engaged couples are required to meet with the priest 6 months before the wedding date.

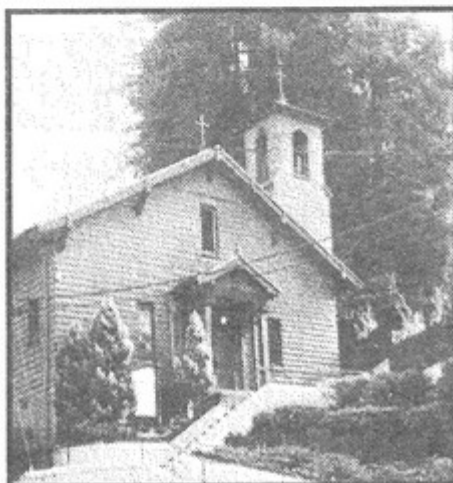
Confessions: By appointment. Call the Rectory.

Religious Education: RCIA. Call the Rectory.

Contact the Rectory at St. Elizabeth, 707-869-2107

Email: churchelizabeth@comcast.net

www.rrchurches.com



St. Elizabeth, Guerneville

Mass Schedule

Sunday: 9:30 a.m.

Weekday Masses: Tue - Fri. 9:00 a.m.

Outdoor church July 4th weekend through
Labor Day weekend.



St. Colman, Cazadero

Mass Schedule

Sunday 11:00 a.m.

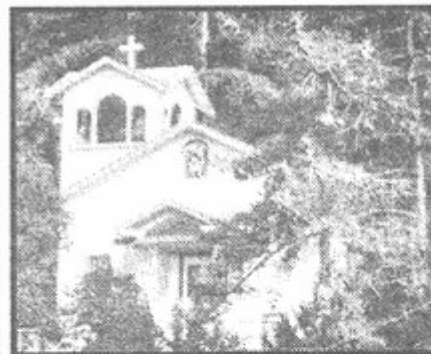
Outdoor church

*Memorial Day
through Labor Day*

St. Catherine of Siena, Monte Rio

Mass Schedule

Saturday 4:00 p.m.



WELCOME to the communities of St. Elizabeth, St. Catherine of Siena & St. Colman! If you would like to become a member of one of our churches, please fill out the form below and place it in the collection basket or mail to St. Elizabeth,

14095 Woodland Drive, Guerneville, CA 95446.

Email: churchelizabeth@comcast.net

www.rrchurches.com

Name: _____

Address: _____

City: _____ ZIP: _____

New Parishioner New Phone Number: _____

New Address _____

Need envelopes Moving - remove name



June 30, 2024

13th Sunday in Ordinary Time

Upcoming Dates

July 25 113th Annual Monte Rio Variety Show

July 28
12:00 pm St Colman Guild Meeting

Mass Intentions

For all parishioners.

Readings

Wis 1: 13-15; 2: 23-24
Ps 30: 2. 4. 5-6. 11. 12. 13 (2a)
2 Cor 8: 7. 9. 13-15
Mk 5: 21-43

Pray For Our Brothers And Sisters

Who are ill or in pain: Judy Viale, Bill Hatch, Jennifer

Who have been called to Eternal Life: Mike Tierney, Randy & Gail

Parish Donations

You can donate online by scanning the QR code at the bottom of the bulletin or by visiting stelizabeth.churchtrac.com/give

Collection Period	1 st Collection	\$1,440.00
June 22-23	2 nd Collection	\$644.00
	<i>Thank you for your generosity!</i>	\$2,084.00

Announcements

The St Elizabeth Outdoor Church

The Outdoor Church has been readied for opening! A very big thank you to Rick DiCarli, Tim Bosque, Steve Cline, Marty and Sue Tierney, Tom and Peggy Christian, David Gillespie, Mary Helt and Gail for all their work bulldozing, raking, sweeping, washing and all else it took to make this happen.

113th Annual Monte Rio Variety Show

Our tickets are sold out! We will have merchandise and raffle tickets for sale after Masses. If you cannot make our show, our raffle is a great way to support this fundraiser and prizes are plentiful -Golfing at Northwood and Bodega Bay, Taste of Monte Rio merchant and gift items, dining at the Union Hotel, and tickets to the 2025 Show! Questions: Go to our website at

<https://monterioshow.com> or text Michele at (707) 486-1739 (be patient on response due to high call volume).

St Elizabeth Parking

The owner of the tan garage building right next to St Elizabeth on Armstrong Woods road is asking our parishioners to please not park in front of his garage. He is unable to access his garage when it's blocked by parked cars. We have ample parking available behind the fire station directly across the street from St Elizabeth Church at St Hubert Hall (parking lot and grass area behind hall). Thank you for your understanding and cooperation.

Annual Ministry Appeal 2024

The work of the *Annual Ministry Appeal (AMA)* is at heart your work, the work to which you are oriented by your Baptism: the service of God through service of your brothers and sisters in Christ. By making a gift to the *Annual Ministry Appeal, One Family in Mission*, you are able to touch souls and change lives throughout our diocese. Thank you to all who have already pledged, moving us closer to our goal as a parish community. Every gift is sincerely appreciated!

Parish Council

Our church has a Parish/Pastoral council. It consists of 7 members -Linda Payne, Barbara and Otto Kobler, Maryanne Gustafson, Susan Poirier, Patrick McDonell and Ana Maria Padilla. The committee meets monthly with Fr Luis, to discuss current and future projects and plans for the parish, and we advise Father on agenda items as needed. Please feel free to reach out to any council member with questions or concerns about our parish.

Monthly Collection Report

The Parish Council has decided to publish the collections on a monthly basis beginning January of 2023. This collection report will show both the collections at Mass but also our online collections. It also shows the estimated expenses that are required to operate our Parish and Mission Churches. We hope to update this on or after the 15th of the following month.

Pastor's Desk

Greetings to all! What a lovely day to celebrate Mass at our outdoor church! Thanks to those who worked so hard to prepare the outdoor church so we can enjoy the facility we often use during the summer season.

For questions about future parish events, please contact Linda Payne at: (707) 953-9166 or cocomokidd@aol.com

Finance Committee Meeting	3 rd Wednesday*, 4 pm	St. Hubert Hall	* of February, May, August and November
St. Colman Guild Meeting	4 th Sunday, 12 pm	St. Colman	

We are in the thirteenth Sunday in Ordinary time and this Sunday the Gospel presents two stories of faith. Both Jairus and the woman with the hemorrhage believe that if they hold to their faith, they will be rewarded. They are convinced that if they stay on course, everything will be well. And their faith is rewarded.

Today's world is often directed away from the practice of faith. Life tosses us plenty of curveballs, and at times it is difficult to continue to stand in the batter's box and wait for the next pitch. We want to bail out; we don't want to get hit by the pitch. When we bail out, however, we seek many secular human solutions.

Why? Because they are readily available, visible, and tangible, and we see others use them. However, the key is not to bail out but, rather, to stand in the batter's box and wait for the ball to curve. Then we can find the one and only solution we need: Jesus. But we must possess faith. Yes, there are many alternatives to faith in God as the solutions to the problems and situations that vex us. We at times believe that human solutions will be the cure. However, they are only bandages; they will never heal our woundedness and direct us toward the path that leads to Jesus.

Jairus and the woman with the hemorrhage, were forced to decide. They had to continue to stand in the batter's box and wait for the ball to curve. Let us do similarly, and when the ball comes, swing away with the bat that is the righteousness of God. We can hit a home run today and, more importantly, will secure eternal life tomorrow.

Peace and blessings,
Fr. Luis

Spirituality Of The Readings

Courtesy of John Foley, SJ, Saint Louis University

Death and Life

The First Reading says that God did not make death.

Alright, then, who did? The reading says it entered the world by means of the devil's envy.

This only makes the problem worse, doesn't it, but maybe we can take a stab at understanding it.

The devil's envy. What is envy, and how could it bring about death?

You and I have beheld with our own eyes, greedy eyes sometimes, what another person possesses: wealth or power or good looks or talent or strength or control or whatever else. Their success can sting and give us anguish over our own lack. We feel—well it is hard to describe what we feel. Anger, fear, panic, and who knows what else.

Multiply that by a million and you will understand how the devil felt when he first got to earth. He had been an archangel, one of the greatest beings in God's creation, second only to God himself. Lucifer, as he was called then (meaning "light-bearer"), was dazzled by God's greatness. He liked it but he did not like being only finitely great in comparison! He found within himself an irresistible envy of God! It was like the positive pole of one magnet when held up to another magnet's positive pole.

Envy.

It propelled Satan straight out of heaven. He landed with a thud on earth. He tumbled across the garden of bounty that God had created. This ex-angel now walked bestially, in stunned silence, and, yes, amid shimmering beauty, innocence and intricacy that now were not his! Then this newly constituted devil came upon the most difficult sight of all. It froze him in his tracks. His eyes lit upon human beings—in their first purity, as yet unsullied. They were "imperishable, and made in God's own image," the First Reading says.

The poet Milton imagined what the devil must have thought of them:

O Hell! what do mine eyes with grief behold, ...
whom my thoughts pursue with wonder, and could love,
so lively shines in them divine resemblance,
and such grace the hand that formed them
on their shape hath poured. ... *

The father of lies was gravely tempted toward loving these two. But anger and jealous rage knocked this unique temptation aside. He decided to capture them instead of loving them. "I can suck them into myself," he thought, "their beauty and all its traces. If I possess them I will be great again. I will be able to continue my war against God and I can win it! Horror and death are small prices for what I will gain!"

By contrast, let us understand what human life could be like without jealousy and envy. The Gospel says this:

What came to be through [Christ] was life,
and this life was the light of the human race. (Jn 1:1-5)

Jesus is satisfied to be himself. He is humble. Not hostile. He grieves for others instead of for his own losses. The daughter of the synagogue official is just "asleep," he says. The crowd laughs. Asleep! What a joke.

But Jesus, with God's own assurance, knew that love is stronger than death, and so he walked through their ridicule, woke the dead girl, and nestled her deep into the rich love that had created her.

Only love brings good. Envy brings death.

"Evil, be thou my good," Satan said! [Milton IV, 110]

What do you and I say?

Confessions

Fr Luis is available to hear Confessions after 9 am Mass on Fridays and before weekend Masses. Please call the rectory to confirm with him, so that he knows to stay late on Friday or arrive early on the weekend. Alternatively, a more convenient time can be scheduled with him by calling the rectory at (707) 869-2107.



**101 REASONS TO USE
JIM LAUFENBERG AS YOUR
SAN FRANCISCO AND RIVER REALTOR®**



**COLDWELL
BANKER**

1 NEIGHBORHOOD KNOWLEDGE. I AM A HOMEOWNER IN SAN FRANCISCO AND RUSSIAN RIVER.

2 TOP CALIBER. #1 AGENT IN SAN FRANCISCO'S TOP-SELLING OFFICE.

3 TOUGH NEGOTIATORS. COMMITTED TO GETTING YOU TOP DOLLAR.

4 LOYALTY. BUILDING TRUST FOR LIFE.

415-269-4997
jim@sf-realty.com

5 DEPENDABILITY. I'M ON THE SPOT WHEN YOU NEED ME.

6-101 CALL TODAY TO LEARN MORE!



CAZADERO SUPPLY
AUTOPARTS • AUTO REPAIR • HARDWARE
TOOLS TIRES
Don Berry - Owner
(707) 632-5257 cazaderosupply.com
6152 Cazadero Hwy. • Cazadero

**Pleasant Hills Memorial Park
AND MORTUARY**
1700 Pleasant Hill Road
Sebastopol CA 95472
707-823-5042

**Parent - Sorensen
Mortuary**
(FD-1415)
301 S. Main St.
Sebastopol
(707) 829-5433

**St. Jude Children's
Research Hospital**
Finding cures. Saving children.
stjude.org/givetoday

OTC, Gifts, Cards, Public Fax & Copier,
Toys, Seasonal, Art, Med/Care Consultations,
Supplies... Friendly Staff...
**LARK
Rexall
DRUGS**
16151 Main Street - Guerneville, CA 95446 - P (707) 869-9055
Taking Care of the River Community

Pray for Peace

SUMMIT FUNDING Inc.
THE HOME LOAN EXPERTS
Otto Kobler
Branch Manager / Sr. Loan Officer
NMLS ID# 225957 | CA BRE. DF 00981742
Office: (707) 522-6300 x1
Fax: (707) 522-6303
okobler@summitfunding.net
3550 Round Barn Blvd., Suite 310
Office 310 & 312
Santa Rosa, CA 95403
www.summitfunding.net/okobler
Branch NMLS ID# 322493 | Summit Funding, Inc. NMLS ID# 3199

To Advertise here, call
**Mission
Publications**
888-253-4358
We Accept

GOD BLESS OUR ADVERTISERS!
The merchants who advertise make our bulletin possible.
When you patronize our advertisers,
please thank them for supporting our parish.