

# ST. ELIZABETH, Guerneville

ST. CATHERINE OF SIENA, Monte Rio • ST. COLMAN, Cazadero

(707) 869-2107 • 14095 Woodland Drive, Guerneville, CA 95446

Office Hours: Tue - Fri 9:00 a.m. - 1:00 p.m.

**Father Luis Peñaloza, PASTOR**

**Baptisms:** By appointment. Preparation classes required.

**Marriages:** Engaged couples are required to meet with the priest 6 months before the wedding date.

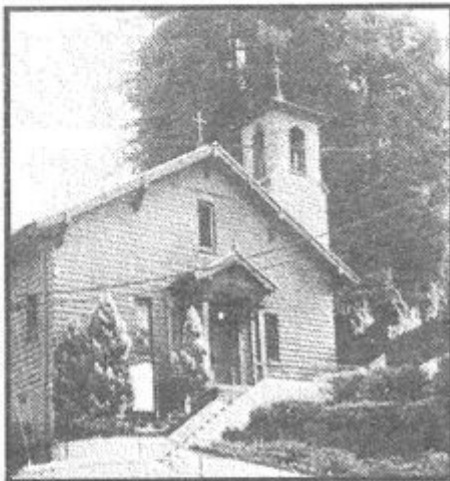
**Confessions:** By appointment. Call the Rectory.

**Religious Education:** RCIA. Call the Rectory.

Contact the Rectory at St. Elizabeth, 707-869-2107

Email: churchelizabeth@comcast.net

www.rrchurches.com



## St. Elizabeth, Guerneville

### *Mass Schedule*

Sunday: 9:30 a.m.

Weekday Masses: Tue - Fri. 9:00 a.m.

Outdoor church July 4<sup>th</sup> weekend through  
Labor Day weekend.



## St. Colman, Cazadero

### *Mass Schedule*

Sunday 11:00 a.m.

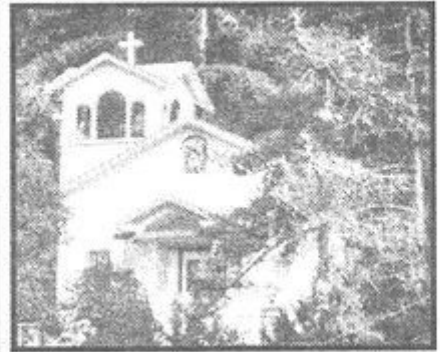
*Outdoor church*

*Memorial Day  
through Labor Day*

## St. Catherine of Siena, Monte Rio

### *Mass Schedule*

Saturday 4:00 p.m.



**WELCOME to the communities of St. Elizabeth, St. Catherine of Siena & St. Colman!** If you would like to become a member of one of our churches, please fill out the form below and place it in the collection basket or mail to St. Elizabeth,

14095 Woodland Drive, Guerneville, CA 95446.

Email: churchelizabeth@comcast.net

www.rrchurches.com

Name: \_\_\_\_\_

Address: \_\_\_\_\_

City: \_\_\_\_\_ ZIP: \_\_\_\_\_

New Parishioner       New Phone Number: \_\_\_\_\_

New Address \_\_\_\_\_

Need envelopes       Moving - remove name



June 23, 2024  
12<sup>th</sup> Sunday in Ordinary Time

### Upcoming Dates

June 23  
12:00 pm St Colman Guild Meeting

July 25 113<sup>th</sup> Annual Monte Rio Variety Show

### Mass Intentions

For all parishioners.

### Readings

Jb 38: 1. 8-11

Ps 107: 23-24. 25-26. 28-29. 30-31 (1b)

2 Cor 5: 14-17

Mk 4: 35-41

### Pray For Our Brothers And Sisters

**Who are ill or in pain:** Judy Viale, Bill Hatch, Jennifer

**Who have been called to Eternal Life:** Patricia Putallaz,  
Mike Tierney, Randy & Gail

### Parish Donations

You can donate online by scanning the QR code at the bottom of the bulletin or by visiting [stelizabeth.churchtrac.com/give](http://stelizabeth.churchtrac.com/give)

Collection Period	1 <sup>st</sup> Collection	\$1,201.00
June 15-16	2 <sup>nd</sup> Collection	\$603.00
		<i>Thank you for your generosity!</i> \$1,804.00

### Announcements

#### **Rectory Closed on June 25**

The Rectory will be closed on Tuesday, June 25th due to a planned power outage.

#### **113th Annual Monte Rio Variety Show**

Our tickets are sold out! We will have merchandise and raffle tickets for sale after Masses. If you cannot make our show, our raffle is a great way to support this fundraiser and prizes are plentiful -Golfing at Northwood and Bodega Bay, Taste of Monte Rio merchant and gift items, dining at the Union Hotel, and tickets to the 2025 Show! Questions: Go to our website at <https://monterioshow.com> or text Michele at (707) 486-1739 (be patient on response due to high call volume).

### **St Elizabeth Parking**

The owner of the tan garage building right next to St Elizabeth on Armstrong Woods road is asking our parishioners to please not park in front of his garage. He is unable to access his garage when it's blocked by parked cars. We have ample parking available behind the fire station directly across the street from St Elizabeth Church at St Hubert Hall (parking lot and grass area behind hall). Thank you for your understanding and cooperation.

### **Annual Ministry Appeal 2024**

The work of the *Annual Ministry Appeal (AMA)* is at heart your work, the work to which you are oriented by your Baptism: the service of God through service of your brothers and sisters in Christ. By making a gift to the *Annual Ministry Appeal, One Family in Mission*, you are able to touch souls and change lives throughout our diocese. Thank you to all who have already pledged, moving us closer to our goal as a parish community. Every gift is sincerely appreciated!

### **Parish Council**

Our church has a Parish/Pastoral council. It consists of 7 members -Linda Payne, Barbara and Otto Kobler, Maryanne Gustafson, Susan Poirier, Patrick McDonell and Ana Maria Padilla. The committee meets monthly with Fr Luis, to discuss current and future projects and plans for the parish, and we advise Father on agenda items as needed. Please feel free to reach out to any council member with questions or concerns about our parish.

### **Monthly Collection Report**

The Parish Council has decided to publish the collections on a monthly basis beginning January of 2023. This collection report will show both the collections at Mass but also our online collections. It also shows the estimated expenses that are required to operate our Parish and Mission Churches. We hope to update this on or after the 15th of the following month.

### **Pastor's Desk**

Greetings, to all! Last Sunday, the Father's Day breakfast was well attended. Unfortunately I missed the celebration but what I heard from parishioners that it was glorious and great fellowship. Thank you, to all who participated especially those who volunteered to make the feast successful.

For questions about future parish events, please contact Linda Payne at: (707) 953-9166 or [cocomokidd@aol.com](mailto:cocomokidd@aol.com)

Finance Committee Meeting	3 <sup>rd</sup> Wednesday*, 4 pm	St. Hubert Hall	* of February, May, August and November
St. Colman Guild Meeting	4 <sup>th</sup> Sunday, 12 pm	St. Colman	

Last week I had opportunity to help at the CYO camp in Occidental, the Marianist had their Youth leadership Camp and I met some of the youth that participated in their camp. What wonderful young adults -very enthusiastic about their faith; full of joy and happy to learn more and strengthen their faith.

Then on Wednesday I did a house and business blessing of a couple I met in one of the restaurants in Santa Rosa. I had a great time meeting the family and their friends. I often forget how little things in our Catholic tradition can keep us connected with other Catholic family in our area. What a blessings and especially great company and great food!

In our Sunday scriptures this twelfth Sunday in Ordinary time, St. Paul reminds us that it was love that allowed Christ to die for all of us so that we can live for others. At times in our lives, things seem rather bleak, and we are uncertain as to where to go. While human solutions can be helpful, ultimately it is through our total confidence in Jesus Christ and his ability to weather the storms that threaten our lives that ultimate solutions will be found. Jesus calmed the storm on the Sea of Galilee when the apostles cried out to him; Jesus will calm the storms of our lives if we have the courage to do the same.

Let us, therefore, turn to him, to the one who can ultimately bring peace in every aspect of our lives. Let us seek the Lord. He will bring us through the storms of this life and, one day, to life eternal.

Peace and blessings!  
Fr. Luis

## **Spirituality Of The Readings**

*Courtesy of John Foley, SJ, Saint Louis University*

### ***Parental Pains***

In the First Reading we get to hear the story of creation told by God himself.

He tells it to the “prophet” Job, who is in great pain.\* People often think that God in the Old Testament is fierce and harsh, but here we find God described as a mother giving birth.

He tells Job that the sea came forth from God's womb! And he says that he took the clouds and wove them into swaddling clothes for baby ocean and then made the clouds into garments.

The infant sea turns out to be a wild child, however. God has to make some parental rules, as when a mother or father says “no throwing the ball inside the house. Go play outside.” It is

### ***Confessions***

Fr Luis is available to hear Confessions after 9 am Mass on Fridays and before weekend Masses. Please call the rectory to confirm with him, so that he knows to stay late on Friday or arrive early on the weekend. Alternatively, a more convenient time can be scheduled with him by calling the rectory at (707) 869-2107.

as if God says to the ocean, “you may have all your wild fun in your own space, but you may not cross onto the dry land. Now mind me.”

The reason God speaks with such maternal care is because he is faced with Job, an individual who has lost hope. God had long delayed answering Job’s prayers, it is true, had let Job’s immense losses go on for a very long time. Now, at last, he tries to soften Job’s despair. “Weren't you present when I lavished such love on everything I created?” he asks. “Don’t you remember my love? Don’t you trust it?”

In the lines of scripture that follow the ones included in our reading, Job sees how wrong his depression had been, how God’s infinite love had been there all along. (Job 9:4ff) Apparently God’s delay was needed in order to strengthen Job’s faith and trust. Maybe real surrender to grace happens this way.

For its part, the Gospel shows Jesus using the same manner of love on the disciples in the boat. He too takes his time giving them help. He lets the winds and waves nearly engulf their boat while he is busy snoozing in the back. To borrow words from the Responsorial Psalm, the heaving boat and its men

*sank to the depths; [and] their hearts melted away in their plight.*

How could Jesus sleep through this? The men shake him into consciousness, and he does finally calm the waves. The disciples must have looked like frightened children as they tried to rebuild their scared dignity and quiet their melted hearts.

Then Jesus revealed his plan, or at least hinted at it. “Do you not yet have faith?” he asked. Strange question. But just like God with Job, Jesus is using tough love to invite their faith to go deeper. “Don’t you remember that God’s love is all around you, and in fact is now riding right next to you in this boat?”

Why are Jesus and God so bent on inducing faith and trust in us?

Because faith and trust are openings that allow God’s love to come into us. He cares enough about us to allow pain and sorrow to find us and to stretch us and to open doors to a deeper relation with him.

Our Lord does not cause the pain and sorrow, but allows it. And lets it stretch us and even to stretch himself. He joins us, and invites us to join him in the saving, widening power of reversal: instead of only happy, painless living, we are allowed to take part in human form in this life of God.



**101 REASONS TO USE  
JIM LAUFENBERG AS YOUR  
SAN FRANCISCO AND RIVER REALTOR®**



**COLDWELL  
BANKER**

- 1** NEIGHBORHOOD KNOWLEDGE. I AM A HOMEOWNER IN SAN FRANCISCO AND RUSSIAN RIVER.
- 2** TOP CALIBER. #1 AGENT IN SAN FRANCISCO'S TOP-SELLING OFFICE.
- 3** TOUGH NEGOTIATORS. COMMITTED TO GETTING YOU TOP DOLLAR.
- 4** LOYALTY. BUILDING TRUST FOR LIFE.
- 5** DEPENDABILITY. I'M ON THE SPOT WHEN YOU NEED ME.
- 6-101** CALL TODAY TO LEARN MORE!

**415-269-4997**  
jim@sf-realty.com



**CAZADERO SUPPLY**  
AUTOPARTS • AUTO REPAIR • HARDWARE  
TOOLS TIRES  
*Don Berry - Owner*  
(707) 632-5257 cazaderosupply.com  
6152 Cazadero Hwy. • Cazadero

**Pleasant Hills Memorial Park  
AND MORTUARY**  
1700 Pleasant Hill Road  
Sebastopol CA 95472  
707-823-5042

**Parent - Sorensen  
Mortuary**  
(FD-1415)  
301 S. Main St.  
Sebastopol  
(707) 829-5433

**St. Jude Children's  
Research Hospital**  
Finding cures. Saving children.  
[stjude.org/givetoday](http://stjude.org/givetoday)

OTC, Gifts, Cards, Public Fax & Copies,  
Toys, Seasonal, Art, Medicare Consultations,  
Supplies... Friendly Staff...  
**LARK  
Rexall  
DRUGS**  
16151 Main Street - Guerneville, CA 95446 - P (707) 869-9055  
Taking Care of the River Community

**Pray for Peace**

**SUMMIT FUNDING Inc.**  
THE HOME LOAN EXPERTS  
  
Otto Kobler  
Branch Manager / Sr. Loan Officer  
Office: (707) 522-6300 x1  
Branch: (707) 522-6303  
NMLS ID# 225937 | CA BRE ID# 00981742 | okobler@summitfunding.net  
3550 Round Barn Blvd., Suite 310  
Office 310 & 312  
Santa Rosa, CA 95403  
[www.summitfunding.net/okobler](http://www.summitfunding.net/okobler)  
Branch NMLS ID# 3774923 | Summit Funding, Inc. NMLS ID# 3129

To Advertise here, call  
**Mission  
Publications**  
**888-253-4358**  
We Accept

**GOD BLESS OUR ADVERTISERS!**

The merchants who advertise make our bulletin possible.  
When you patronize our advertisers,  
please thank them for supporting our parish.