

ST. ELIZABETH, Guerneville

ST. CATHERINE OF SIENA, Monte Rio - ST. COLMAN, Cazadero

(707) 869-2107 • 14095 Woodland Drive, Guerneville, CA 95446

Office Hours: Tue - Fri 9:00 a.m. - 1:00 p.m.

Father Luis Peñaloza, PASTOR

Baptisms: By appointment. Preparation classes required.

Marriages: Engaged couples are required to meet with the priest 6 months before the wedding date.

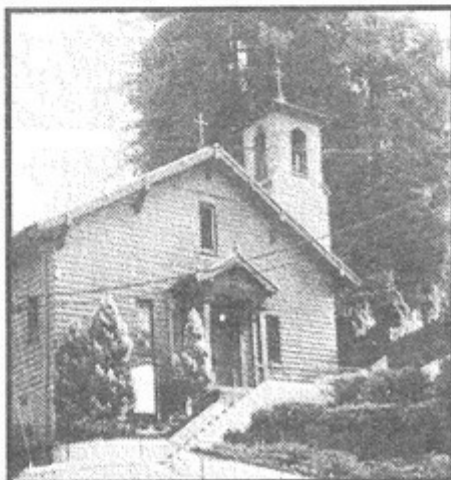
Confessions: By appointment. Call the Rectory.

Religious Education: RCIA. Call the Rectory.

Contact the Rectory at St. Elizabeth, 707-869-2107

Email: churchelizabeth@comcast.net

www.rrchurches.com



St. Elizabeth, Guerneville

Mass Schedule

Sunday: 9:30 a.m.

Weekday Masses: Tue - Fri. 9:00 a.m.

Outdoor church July 4th weekend through
Labor Day weekend.



St. Colman, Cazadero

Mass Schedule

Sunday 11:00 a.m.

Outdoor church

*Memorial Day
through Labor Day*

St. Catherine of Siena, Monte Rio

Mass Schedule

Saturday 4:00 p.m.



WELCOME to the communities of St. Elizabeth, St. Catherine of Siena & St. Colman! If you would like to become a member of one of our churches, please fill out the form below and place it in the collection basket or mail to St. Elizabeth,

14095 Woodland Drive, Guerneville, CA 95446.

Email: churchelizabeth@comcast.net

www.rrchurches.com

Name: _____

Address: _____

City: _____ ZIP: _____

New Parishioner New Phone Number: _____

New Address _____

Need envelopes Moving - remove name



June 16, 2024

11th Sunday in Ordinary Time

Upcoming Dates

June 22 9:00 am	Outdoor Church Cleanup
June 23 12:00 pm	St Colman Guild Meeting
July 25	113 th Annual Monte Rio Variety Show

Mass Intentions

Sunday 9:30 am Judy Viale [heart health],
Bill Hatch [bone cancer]
requested by Michele McDonell

Readings

Ez 17: 22-24
Ps 92: 2-3, 13-14, 15-16
2 Cor 5: 6-10
Mk 4: 26-34

Pray For Our Brothers And Sisters

Who are ill or in pain: Judy Viale, Bill Hatch

Who have been called to Eternal Life: Harry Vogl, Patricia Putallaz, Mike Tierney

Parish Donations

You can donate online by scanning the QR code at the bottom of the bulletin or by visiting stelizabeth.churchtrac.com/give

Collection Period	1 st Collection	\$1,076.00
June 8-9	2 nd Collection	\$494.00
	<i>Thank you for your generosity!</i>	\$1,570.00

Announcements

Outdoor Church Cleanup Saturday, June 22

The Outdoor Church will be opening Sunday, June 30 so we could really use your help!

Cleanup will be Saturday, June 22, starting around 9 am. Bring a rake, broom and wear gloves. A blower would also be nice. Also, we need some cleanser or paint to cover a few spots of graffiti. If you'd rather clean up the area during the week, you are welcome to.

Just stop by and go for it. We need everyone's help to make this happen. Thank you!

113th Annual Monte Rio Variety Show

Our tickets are sold out! We will have merchandise and raffle tickets for sale after Masses beginning June 15th. If you cannot make our show, our raffle is a great way to support this fundraiser and prizes are plentiful - Golfing at Northwood and Bodega Bay, Taste of Monte Rio merchant and gift items, dining at the Union Hotel, and tickets to the 2025 Show! Questions: Go to our website at <https://monterioshow.com> or text Michele at (707) 486-1739 (be patient on response due to high call volume).

St Elizabeth Parking

The owner of the tan garage building right next to St Elizabeth on Armstrong Woods road is asking our parishioners to please not park in front of his garage. He is unable to access his garage when it's blocked by parked cars. We have ample parking available behind the fire station directly across the street from St Elizabeth Church at St Hubert Hall (parking lot and grass area behind hall). Thank you for your understanding and cooperation.

Annual Ministry Appeal 2024

The work of the *Annual Ministry Appeal (AMA)* is at heart your work, the work to which you are oriented by your Baptism: the service of God through service of your brothers and sisters in Christ. By making a gift to the *Annual Ministry Appeal, One Family in Mission*, you are able to touch souls and change lives throughout our diocese. Thank you to all who have already pledged, moving us closer to our goal as a parish community. Every gift is sincerely appreciated!

Parish Council

Our church has a Parish/Pastoral council. It consists of 7 members - Linda Payne, Barbara and Otto Kobler, Maryanne Gustafson, Susan Poirier, Patrick McDonell and Ana Maria Padilla. The committee meets monthly with Fr Luis, to discuss current and future projects and plans for the parish, and we advise Father on agenda items as needed. Please feel free to reach out to any council member with questions or concerns about our parish.

Monthly Collection Report

The Parish Council has decided to publish the collections on a monthly basis beginning January of 2023. This collection report will show both the collections at Mass but also our online collections. It also shows the estimated expenses that are required to operate our Parish and Mission Churches. We hope to update this on or after the 15th of the following month.

For questions about future parish events, please contact Linda Payne at: (707) 953-9166 or cocomokidd@aol.com

Finance Committee Meeting	3 rd Wednesday*, 4 pm	St. Hubert Hall	* of February, May, August and November
St. Colman Guild Meeting	4 th Sunday, 12 pm	St. Colman	

Pastor's Desk

Just a quick apology for the last Sunday Pastor's desk, yes, I made a mistake -I thought last Sunday would be the Feast of Sacred Heart. So, this Sunday will be the 11th Sunday in Ordinary time.

Last week I was at the Clergy week in Ukiah and made a mistake of going to the wrong Hotel, I thought we were going to the same place last year but they changed the hotel this year, instead of Hampton Hotel, we end up at Holiday Inn which is a newer hotel that we never been too, but I'm glad that it is at the same street. I learned that I should read the information thoroughly rather than assuming what the letter says.

This Sunday Gospel is quite familiar to all of us, first, it might be helpful to understand the audience to which Mark was writing. At a time when the early Christian community was being persecuted, the evangelist Mark wanted to provide hope. His community had its doubts about their reality as Christian disciples. Mark's inclusion of the parable of the mustard seed seeks to calm their fears and show them that having faith will reap benefits.

In our lives today, we likely have our own doubts about our own expressions of discipleship. Moments of suffering or desolation may make us question the work of God. More so, we may feel like we have no control. In a society that often rewards hard work over rest, we feel like we have to do more to cultivate our faith. On the contrary, Jesus is telling his disciples and us that God waters and cultivates the seeds planted, sometimes in ways that we can't understand, or we don't like. Having the faith of a mustard seed is about trusting God beyond one's ability to understand.

Jesus emphasizes that the mustard seed grows through the dirt and weeds to be a large plant offering shade to birds. In this way, the kingdom of God breaks through the dirt of the world. Perhaps the negativity or the chaos of today's world. Amid desolation, we often lose sight of the kingdom of God, or we fail to recognize the ways in which the mystery of God is active in the world. Jesus invites us to trust that the kingdom is near, working to break through the 'dirt' of the world to offer us a shelter of safety and belonging.

Peace and blessings! In gratitude to all of you that I'm still able to celebrate the Eucharist with you all!

Fr. Luis

Spirituality Of The Readings

Courtesy of John Foley, SJ, Saint Louis University

Eat Up

In olden days farmers would sow seeds in their lands and then simply wait. When a crop was ready they would reap it, using a scythe (a "blade").

A whole process then had to follow. The neighbors would gather with a farmer at each step, to help. They would collect each other's crops into stacks, or "pooks" as they were called, so that by counting pooks each farmer could know how much grain to expect from his harvest.

Threshing came next—separating the husks and straw from the grain—followed in the older cultures by "winnowing," which detached the heavier grain from the lighter chaff.

A farmer would ...

*sleep and rise night and day,
and through it all
the seed would sprout and grow,
he knows not how.
Of its own accord the land yields fruit,
first the blade, then the ear,
then the full grain in the ear. (Mark 4:26)*

The grains were tiny morsels at first, but at the last, they presented a massive display, poised for harvest. The farmer and his friends modestly worked along with this mysterious process. An Irish friend of mine explained the process to me while we drove around Ireland.*

Jesus says this parable is about the kingdom of God. But he does not explain how. It recommends modesty, for sure. We Christians must arrange ourselves humbly and trustingly, like the farmers, while the mystery takes place within our souls.

And of course we need to "detach the husks and straw from the lighter chaff." This would mean pulling ourselves away from distractions and fascinations that drag us away from who we are meant to be. Distractions such as impressing others, winning all the time, using God's name in vain, criticizing people ... fill out the list.

But the Holy Spirit of God plants seeds in our souls and quietly begins their growth. Followers of Christ must let the seeds grow at their own rate, and then go on to the next step only when they are ready. Our job had been to prepare the land, which is us, and then see the result that happens "of its own accord."

In a second parable, the quiet status of a seed is apparent. Jesus says that the mustard seed is the smallest and humblest of all the seeds on earth. **The tiny mustard seed, the size of a pinhead, unassumingly grows to be a great big shrub or even a tree that is taller than a man's head.

So are we to be humble in a similar way. The Spirit's plantings in our souls will seem exceedingly tiny, even unnoticeable. Our humility—like the farmers' with the seeds—means waiting, or in other words, being patience. We are fallow lands. We must be ready and anticipating for something greater than ourselves, something the Spirit bestows.

This means that the "largest of plants" will not be you or me, but God—present in our lives and in our communities. Since God is great and to be loved above all things and within all things, since God is taller than a man or woman's head, so to speak, then he is large enough to found our greatest plans or hopes.

Definitely, let us put our actions into the world! But first ...

... let us be fallow.

Confessions

Fr Luis is available to hear Confessions after 9 am Mass on Fridays and before weekend Masses. Please call the rectory to confirm with him, so that he knows to stay late on Friday or arrive early on the weekend. Alternatively, a more convenient time can be scheduled with him by calling the rectory at (707) 869-2107.



101 REASONS TO USE
JIM LAUFENBERG AS YOUR
SAN FRANCISCO AND RIVER REALTOR®



- 1** NEIGHBORHOOD KNOWLEDGE. I AM A HOMEOWNER IN SAN FRANCISCO AND RUSSIAN RIVER.
 - 2** TOP CALIBER. #1 AGENT IN SAN FRANCISCO'S TOP-SELLING OFFICE.
 - 3** TOUGH NEGOTIATORS. COMMITTED TO GETTING YOU TOP DOLLAR.
 - 4** LOYALTY. BUILDING TRUST FOR LIFE.
 - 5** DEPENDABILITY. I'M ON THE SPOT WHEN YOU NEED ME.
- 6-101** CALL TODAY TO LEARN MORE!

415-269-4997
jim@sf-realty.com



CAZADERO SUPPLY
AUTOPARTS • AUTO REPAIR • HARDWARE
TOOLS TIRES
Don Berry - Owner
(707) 632-5257 cazaderosupply.com
6152 Cazadero Hwy. • Cazadero

Pleasant Hills Memorial Park
AND MORTUARY
1700 Pleasant Hill Road
Sebastopol CA 95472
707-823-5042

Parent - Sorensen
Mortuary
(FD-1415)
301 S. Main St.
Sebastopol
(707) 829-5433

St. Jude Children's Research Hospital
Finding cures. Saving children.
stjude.org/givetoday

OTC, Gifts, Cards, Toys, Seasonal, Art Supplies...
Public Fax & Copies, MediCare Consultations, Friendly Staff...
LARK
Rexall
DRUGS
14251 Main Street - Guerneville, CA 95446 - P (707) 869-9055
Taking Care of the River Community

Pray for Peace

SUMMIT FUNDING Inc.
THE HOME LOAN EXPERTS
Otto Kobler
Branch Manager / Sr. Loan Officer
NMLS ID# 225957 | CA BRE ID# 00981742
Office: (707) 522-4300 x1
Fax: (707) 522-4303
okobler@summitfunding.net
3550 Round Barn Blvd., Suite 310
Office 310 & 312
Santa Rosa, CA 95403
www.summitfunding.net/okobler
Branch NMLS ID# 327493 | Summit Funding, Inc. NMLS ID# 3199

To Advertise here, call
Mission Publications
888-253-4358
We Accept
VISA
MasterCard
American Express

GOD BLESS OUR ADVERTISERS!
The merchants who advertise make our bulletin possible.
When you patronize our advertisers,
please thank them for supporting our parish.